



**HELIOS** RENEWABLE  
ENERGY  
PROJECT

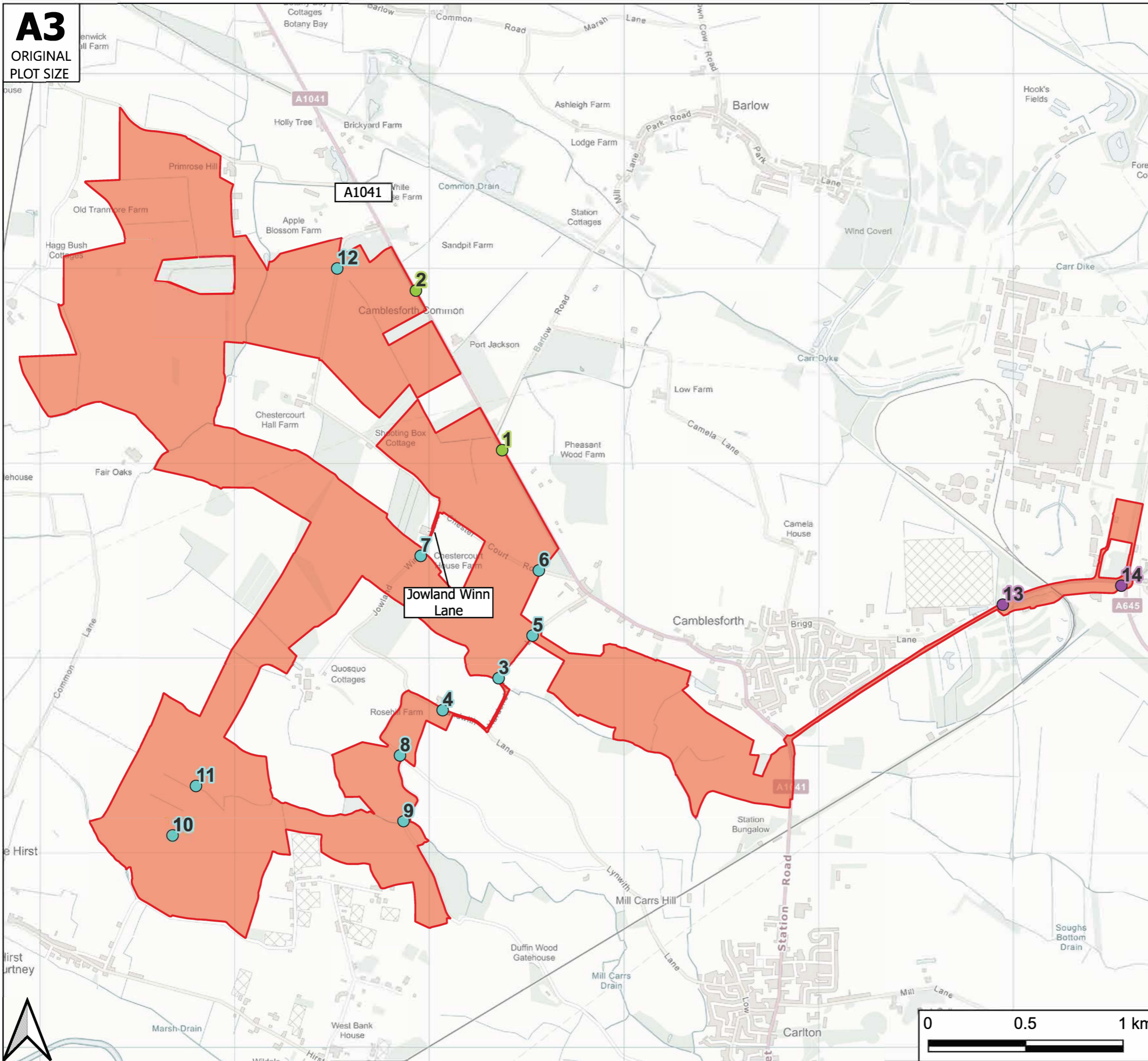
**PINS Document Number:**  
EN010140/APP/6.2.10.5

**Pursuant to:**  
APFP Regulation 5(2)(a)

## **Environmental Statement Figure 10.5: Site Access Locations**

June 2024

**A3**  
ORIGINAL  
PLOT SIZE



Reproduced from .....

**Key**

- Site Boundary
- Access Locations
  - Cable Route Access Points
  - Field Connection Points
  - Main Site Access Points

Rev	Date	Details	Drawn by	Checked by	Approved by

Bristol  
Cambridge  
London  
Welwyn Garden City



Transport Planning Associates

40 Berkeley Square  
Clifton  
Bristol  
BS8 1HP

0117 925 9400  
[www.tpa.uk.com](http://www.tpa.uk.com)

CLIENT:  
**Enso Green Holdings D Limited**

PROJECT:  
**Helios Renewable Energy Project**

TITLE:  
**Access Locations**

STATUS:  
**FOR INFORMATION**

SCALE: NTS	DATE: 15/03/24	DRAWN: AC	CHECKED: RR	APPROVED: JD
JOB NO: 2104-025		DRAWING NO: Figure 10.5		REVISION: -